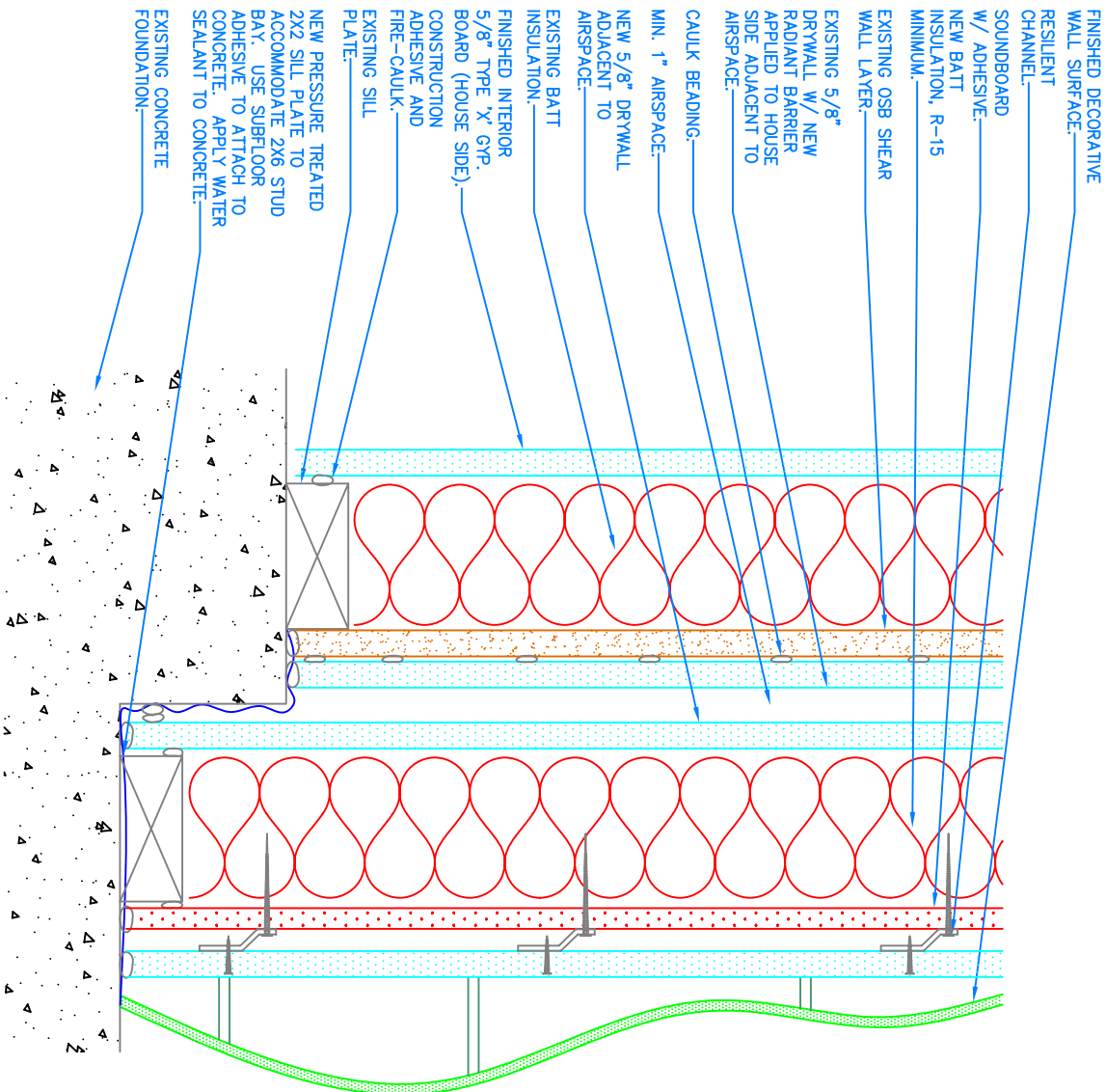


HOUSE SIDE

INSIDE SHOP

- NOTES:
1. CAULK AND SEAL AROUND OLD AND NEW SILL PLATE. SEAL ALSO AROUND ALL EXISTING AND NEW SHEATHING, GYP. BD. AND STUDS. MAINTAIN AIR BARRIER FROM EXTERIOR AND INTERIOR, INCLUDING TOP AND BOTTOM OF WALL.
 2. SPRAY FIRE RETARDANT ON INSIDE OF WALL CAVITY AND SOUNDBOARD.
 3. INCORPORATE SOUND-ABSORBING MATERIAL FOR DECORATIVE INTERIOR WALL SURFACE.
 4. MARK STUD LOCATIONS ON WORKSHOP SIDE FOR FUTURE USE, DESPITE RESILIENT CHANNELS.
 5. COMPLETELY SEAL INSIDE OF WALL CAVITY W/ SEALANT. CAULK AND SEAL 1" AIRSPACE. ADD RADIANT BARRIER TO HOUSE SIDE FACING AIRSPACE.
 6. ISOLATE ALL HARD MATERIAL CONTACTS WITH DRY CAULK BEADS OR LIQUID NAILS ADHESIVE; AT GYP BOARD TO STUDS USE A BEAD OF FIRECAULK AT EACH SIDE OF EVERY STUD. WITH A BEAD OF ADHESIVE IN THE MIDDLE. USE RESILIENT CHANNEL ON THESE WALLS BECAUSE IT IS ON A WALK-PATH, AND THERE IS LITTLE NEED TO ATTACH OBJECTS TO STUDS.
 7. SEAL ALL WOOD PENETRATIONS BY UTILITIES WITH INTUMESCENT SEALANT.
 8. ADD METAL STRUCTURAL REINFORCEMENT BRACKETS AND STRAPPING AS NECESSARY.



WORKSHOP INTERIOR DEMISING WALL SECTION

1